



WRITTEN BY KAREN MARLEY
PHOTOGRAPHY BY SANDRA KICMAN

ALL IN GOOD TIME

Tucked against the shore of Canandaigua Lake is a tribute to excellence. It is a home where every detail – trims, cornices, columns, millwork, moldings, stonework, paneling, beams, fixtures, flooring – is superlative in functionality and good taste. But this house is no precious gem or trophy showpiece.

THE ACTIVE HOUSEHOLD

The homeowners refused to compromise on quality because their vibrant, athletic lifestyle necessitated a home with materials and craftsmanship that could withstand the demands thrust upon it.



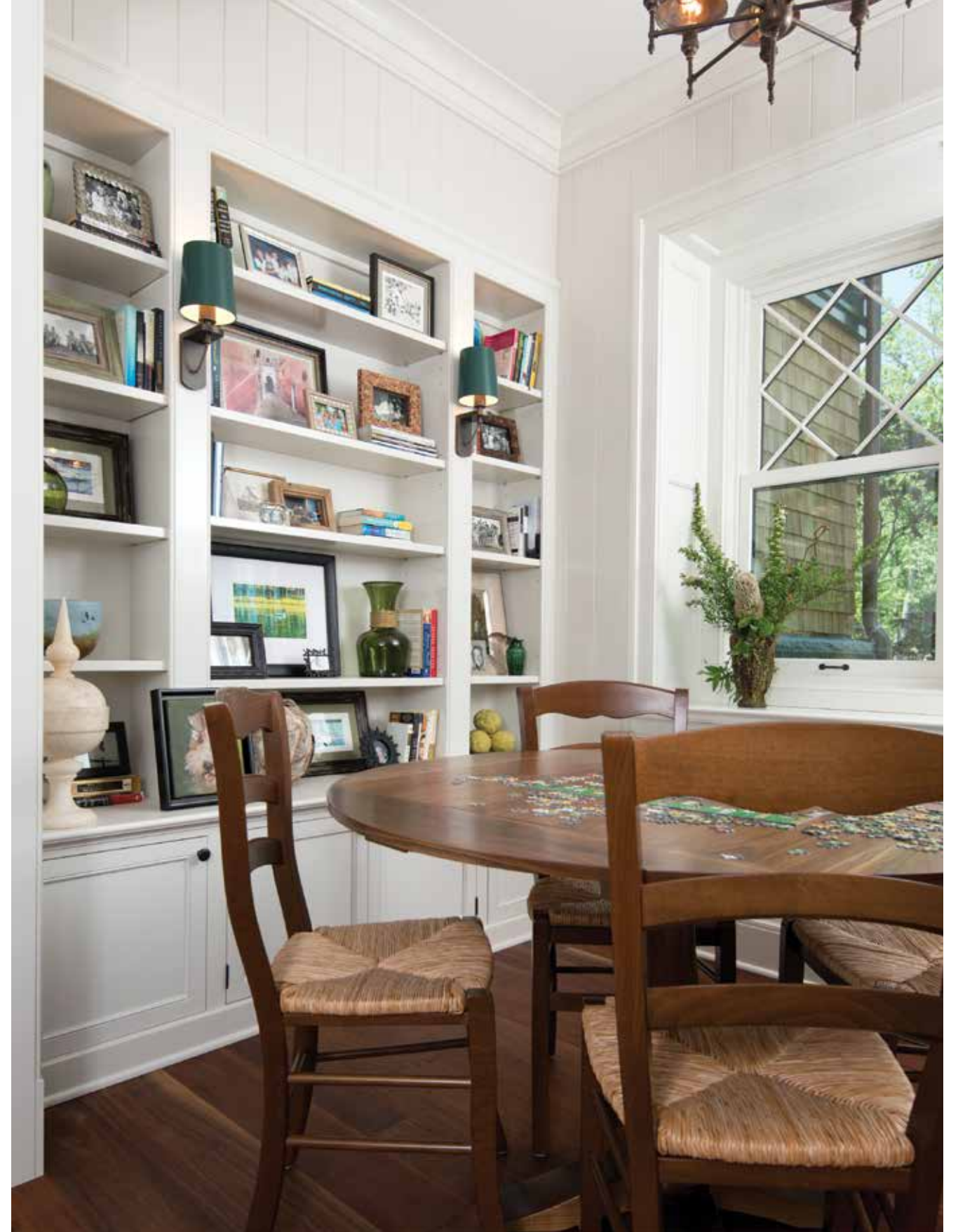
It is a wintertime base lodge for snow sports pursued with the vigor expected of a family with a former international ski racer and kids who compete at elite levels. Summertime hosts a constant flow of stand-up paddleboards, tennis, swimming, kayaking, acrobatics, boating, entertaining, and much more.

DONE ONCE, DONE RIGHT

"The homeowner wanted a place to go, relax and enjoy life with friends and family; a place that could be built once and be done with it," explains Sam Rode, owner of Rode Construction, the project's head contractor. "And they wanted a tasteful, classy execution; a place where wear and tear increases the comfort and aesthetics."

The homeowners like shingle-style homes. The architect, Jon Schick, drew from the Northern and Adirondack styles that recede into the landscape rather than from the perkier coastal versions. Hunter green trim against





natural wood mitigates the home's large footprint and blends it into the surroundings.

Premium materials were selected for aesthetics, durability, and longevity. Nothing hints of synthetics or unethical practices. Think authentic maturity and patina, not artificially distressed.

"A lot of thought and discussion went into wanting top quality, long-lasting materials. It was careful, well-researched decision-making," says Schick.

Exterior trim and crown moldings, all mahogany, are National Forest Stewardship Council certified. Pressure treated cedar shake shingles extend longevity. Copper



gutters will age to a lustrous blue-green hue. All the stonework is locally-sourced granite from the Adirondacks. The interior, with very little drywall, is dominated with bright, white painted wood wainscot, bead board, and tongue and groove paneling.

Soapstone countertops, preferred over granite's pristine shine, were chosen for their aging abilities. Reclaimed walnut floors, treated with Rubio Monocoat Oil Plus floor finish (free of volatile organic compounds), radiate a rich brown and will eventually develop wear patterns. But that is the point. The house will wear in like a pair of favorite jeans.



TOP TIER CRAFTSMANSHIP

Every detail of craftsmanship supports the home's commitment to excellence. Rode, who specializes in finding tradespeople capable of executing specialized orders, loved the project.

"There were over 30 different millwork profiles for the exterior trim and moldings alone," says Rode.

Smith Lumber was selected to provide impeccable lumber for the home's structure. Other vendors came on board to focus on specialized features, like the turret's interior ceiling, which demanded precision capable of impressing NASA engineers. At one point, ceiling pieces were shaved 3/32 of an inch! The turret's custom-cut stonework started with blocks weighing 2,000 pounds and graduated upward, finishing with pieces small enough to be hand carried.

Then there are the spaces themselves: boat slip, full-sized tennis court, dock with a diving board, outdoor shower, and exterior stone stairway. Inside, five marble bath-rooms feature custom-tiled showers. The kitchen beckons with a cerused oak island and coffered beam ceilings that are replicated in the dining and family rooms. An upstairs sleeping porch enchants you with exposed mahogany beams and lake views.

"It's a down-to-earth family. Everything was about integrating their high-energy activities with the home," says Rode. "It's amazing." **DESIGNNY**

DESIGN RESOURCES

Visit designnymagazine.com for links to these resources.

RODE CONSTRUCTION	PAGE 21	FERGUSON BATH, KITCHEN & LIGHTING GALLERY	PAGE 79	PIONEER MILLWORKS	PAGE 55
SMITH LUMBER & HARDWARE CENTER	PAGE 21	CONCEPT II	PAGE 72	R. JON SCHICK, AIA ARCHITECT	PAGE 29
ROCHESTER COLONIAL MANUFACTURING	PAGE 30	CALIFORNIA CLOSETS	PAGE 49	SOLID SURFACES, INC.	
		NEW ENGERY WORKS	PAGE 55	WM. B. MORSE LUMBER CO.	PAGE 48